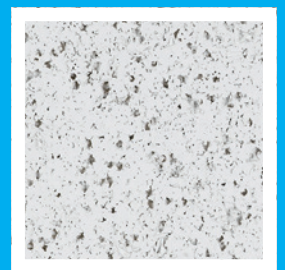




KNAUFCEILING
Solutions

DATASHEET

HERADESIGN[®] Micro



HERADESIGN[®] Micro is a single layer magnesite bonded wood wool acoustic ceiling and wall panel.

- Fine pored surface texture
- Building biology recommended
- Cradle to Cradle Certified[®] Gold for white and natural colours only

[KNAUFCEILINGSOLUTIONS.COM](https://www.knaufceiling.com)

YOUR **CEILING**
OUR **SOLUTIONS**

| System | A2.1, A2.2 | B2.1, B2.2 | | | | C2.1 | S2.1 | | | | | | | |
|--|---|--------------------------|----------------------|-------------------------|------------------------------|--------|------|-------|-----------|--------------|------|------------|--|---|
| Edge details | VK-09 | GK | AK-02/5 | AK-03 | SK-04 | SY-02 | | | | | | | | |
| | VK-10 | AK-00 | AK-02/10 | | SK-05 | | | | | | | | | |
| | VK-10/5 | | AK-02/20 | | SK-06 | | | | | | | | | |
| Dimensions (mm) | 600 x 600, 625 x 625, 1200 x 600, 1250 x 625, additional sizes on request. | | | | | | | | | | | | | |
| Thickness (mm) | 25, 35 | | | | | | | | | | | | | |
| Weight (kg/m²) | 15.0 (25mm), 19.0 (35mm) | | | | | | | | | | | | | |
| Sound absorption | Thickness (mm) | TCH (mm) | HERADESIGN® (mm) | Acoustic lining (kg/m²) | Frequencies (Hz), α_p | | | | | Entire range | | Class | | |
| | 25 | 55 | 0 | 0 | 125 | 250 | 500 | 1000 | 2000 | 4000 | NRC | α_w | | D |
| | 25 | 55 | 0 | 90 | 0.25 | 0.45 | 0.55 | 0.45 | 0.40 | 0.45 | 0.50 | 0.45 | | D |
| | 25 | 200 | 0 | 0 | 0.45 | 0.60 | 0.45 | 0.30 | 0.30 | 0.35 | 0.40 | 0.35 (L) | | D |
| | 25 | 200 | 25 | 90 | 0.45 | 0.40 | 0.30 | 0.25 | 0.30 | 0.30 | 0.30 | 0.30 (L) | | D |
| Sound attenuation | Dn,f,w bis zu 30 dB according DIN EN ISO 10848-2:2006 | | | | | | | | | | | | | |
| Ball impact safety | Ball impact resistant according to DIN 18 032 / part 3 or class 1A according to EN 13964 annex D, Ball impact resistant for panel thicknesses ≥ 25mm | | | | | | | | | | | | | |
| | <ul style="list-style-type: none"> • Ceiling panelling system B2.1, B2.2, C2.1 • Wall panelling system B2.1, B2.2, S2.1 | | | | | | | | | | | | | |
| Fire resistance class | EI 30 (a←b): detailed structure according to usability certificate | | | | | | | | | | | | | |
| Reaction to Fire | Euroclass B-s1,d0 | | | | | | | | | | | | | |
| Thermal conductivity | $\lambda = 0.09 \text{ W/mK}$ gemäß EN 12667 | | | | | | | | | | | | | |
| Humidity resistance | Suitable for rooms with a constant humidity of up to 90%. | | | | | | | | | | | | | |
| Application areas | A decorative and acoustically effective suspended ceiling and wall panel for use in interior spaces as well as roofed outdoor areas that are not directly exposed to environmental influences such as rain or pollutants. | | | | | | | | | | | | | |
| Installation | The installation of HERADESIGN® acoustic panels should take place during the last phase of the job, and in temperature and humidity controlled conditions. All building activities which create dust must be completed before the start of installation. Store the panels flat and protect against moisture and dirt. The packaging does not protect the products against rain. HERADESIGN® products should be installed in strict accordance with Knauf Ceiling Solutions installation and storage guidelines. | | | | | | | | | | | | | |
| Designation code | WW-EN 13168-L4-W2-T2-S2-P2-CI3 | | | | | | | | | | | | | |
| Special information | <ul style="list-style-type: none"> • Manufacturing tolerances in nominal dimensions: L4, W2, T2: ± 1 mm, for lengths > 1250mm L4: ± 2mm • Maximum changes in dimension in standard climate 23° C/50 % relative humidity: ± 1 ‰ | | | | | | | | | | | | | |
| Cleanability | | | | | | | | | | | | | | |
| Colours | Standard colours | | Vario Design colours | | | | | | | | | | | |
| | White Similar to RAL 9010 | Beige Natural tone 13 | Granite | Steel | Green Marble | Copper | Oak | Brass | Sandstone | Concrete | | | | |
| <ul style="list-style-type: none"> • Other colours from popular RAL and NCS colour systems are available. • Deviations in colour and visual appearance may occur due to the rough fibre and panel surface. | | | | | | | | | | | | | | |
| Sustainability | | | | | | | | | | | | | | |

Products may vary from country to country. Please contact your local sales representative. For further information and legal notice, please visit our website.